



MANGAN INDUSTRIAL GROUP

PEDESTAL CRANES

A pedestal Crane is an elevating and rotating lifting device used to transfer materials or personnel to or from marine vessels, barges and structures. This crane can be used on its fixed foundation such as oil platforms or on a floating installation such as vessels.

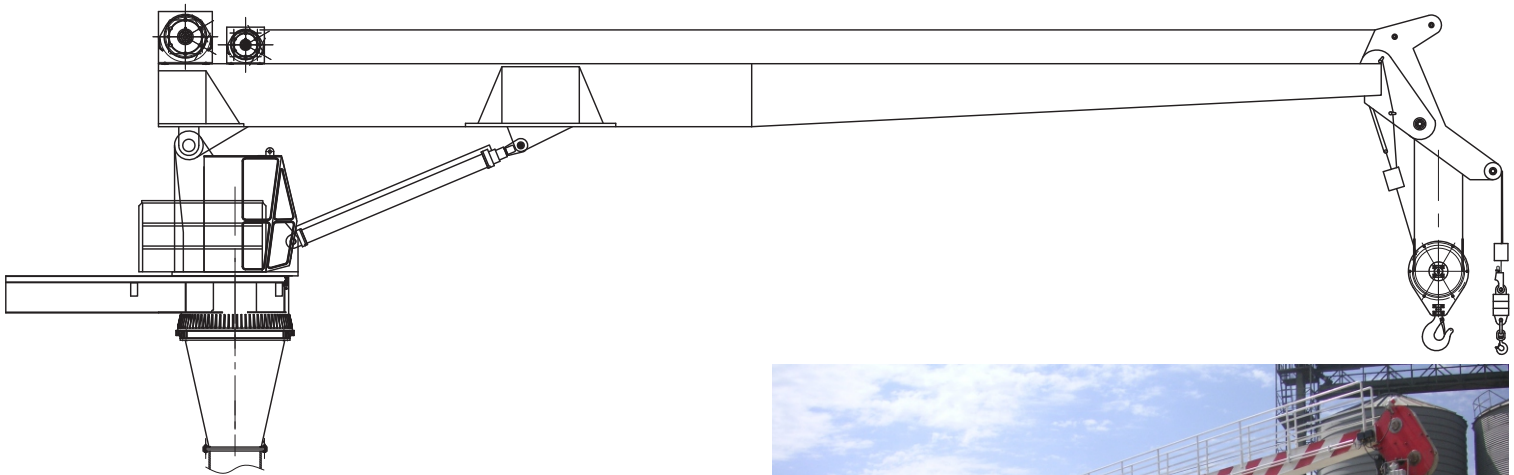
Three main operating mechanisms of pedestal crane are hoisting, slewing and luffing. Load hoisting is performed by drum and motor-gearbox mounted on the boom or fixed pedestal. The 360° rotation of the super structure is carried out by means of a slew bearing which is mounted on pedestal or base. The luffing motion is obtained by means of a hydraulic jack and/or lifting cables.

Pedestal cranes are divided into some groups according to:

- The boom type (truss or box)
- The luffing mechanism (hydraulic jack or cable)



MANGAN has successfully provided and delivered a noticeable range of these cranes. The pedestal crane of Abouzar oil platform and the explosion proof crane of Iranian Offshore Engineering and Construction Company (I.O.E.C) are examples of the executed projects.



- Existence of a telescopic boom

MANGAN developed the knowledge of design and manufacturing of different types of pedestal cranes. The main standard used for design of this crane is API Spec 2C.

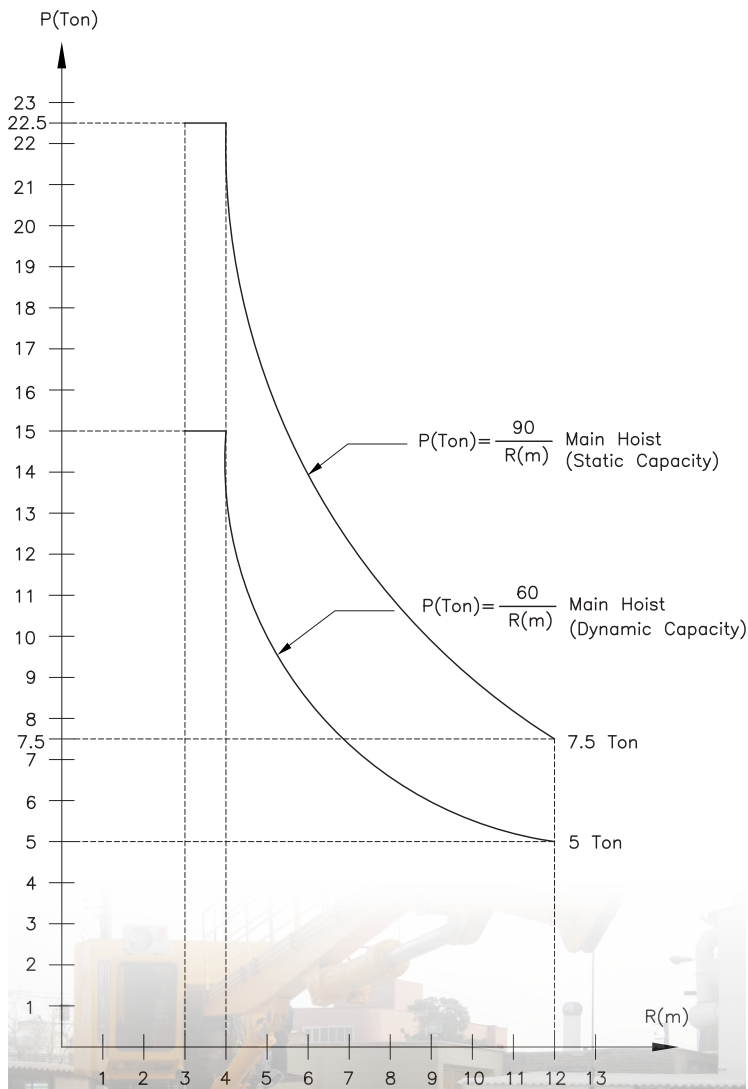




MANGAN INDUSTRIAL GROUP

PEDESTAL CRANES

The main design parameters for a pedestal crane are the maximum lifting load and the radius of the movement of the boom. To obtain the best efficiency, by increasing the radius, the maximum lifting load decreases. These cranes are typically designed for lifting capacity of 5-200 tons.



No. 401, Hefdah Shahrivar Ave.Km 5 Old Karaj Road Tehran-Iran

Po Code: 13787-56111

Tel: +98 21 66 80 33 64

Po Box: 13865-193

Fax: +98 21 66 80 13 75



OKX-XXX-CAT-01